

Psychology Study Summary And Research

15/05/2024 3:43 pm NZST

Psychology Study Summaries and Research

Select a subject

For HL Students

For SL Students

Psychology Study Summaries and Research (HL)

Research in Psychology Feature (HL)

Welcome to the **Revision Village IB Psychology Research in Psychology** collection for HL students. This feature can help you revise different studies which may be essential for your Paper 1 examination. You can also practise answering Paper 3-type questions.

When you access a Research in Psychology card, you will see a summary of a key study in on the left side. These studies deal with the following topics: cognitive, biological, & sociocultural approaches. These studies are regularly updated to give you depth of knowledge and understanding of the fundamentals of research. Students should read the content of these studies carefully and assess their understanding by answering corresponding questions on the right side. The questions provided are similar to the Paper 3 static questions which explore the following topics:

Research methods (e.g. "State the research method used in the study and identify two characteristics of the method.") Sampling methods (e.g. "State the sampling method used in the study and describe two characteristics of the method.") Ethical considerations in research (e.g. "Describe ethical considerations that the researchers applied in this study and explain if any additional ethical considerations could be implemented.") Generalisability, credibility, and bias in research (e.g. "Discuss how the researcher can ensure the credibility of the study's findings.")

- **Research methods**

e.g. "State the research method used in the study and identify two characteristics of the method."

- **Sampling methods**

e.g. "State the sampling method used in the study and describe two characteristics of the method."

- **Ethical considerations in research**

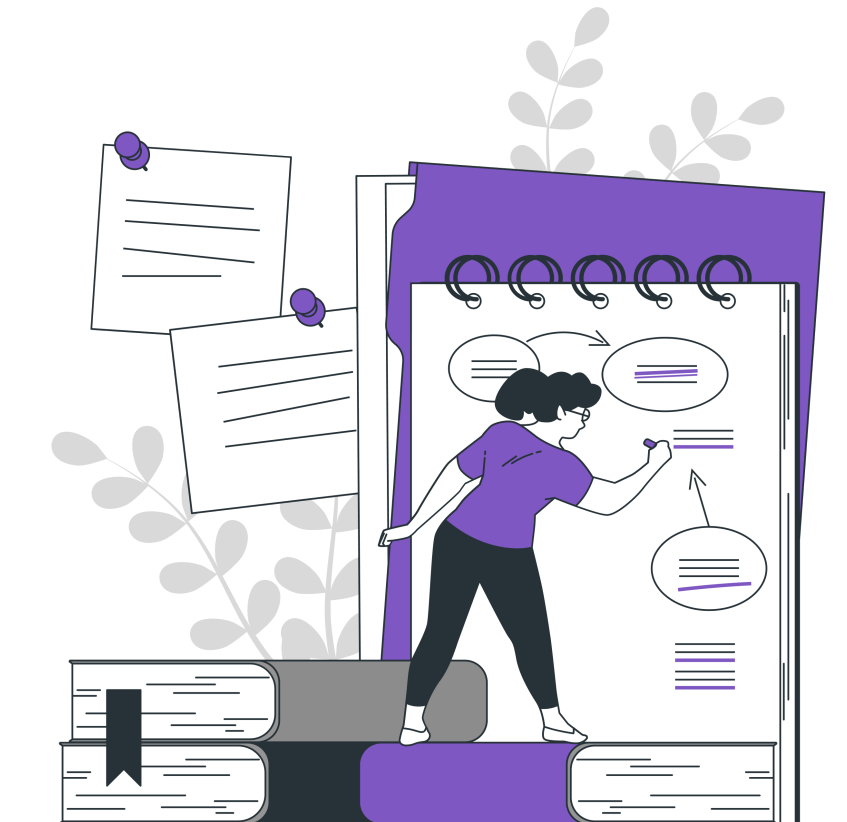
e.g. "Describe ethical considerations that the researchers applied in this study and explain if any additional ethical considerations could be implemented."

- **Generalisability, credibility, and bias in research**

e.g. "Discuss how the researcher can ensure the credibility of the study's findings."

For every question, you will be provided with markschemes, video solutions, and Newton AI to support your learning.

Because the Research in Psychology uses key studies apart from new research, not only will you be practising for Paper 3, but you will also be revising key studies related to the topics in Paper 1!



What is the difference between Open Study and Examination Mode?

This feature can be attempted in either Open Study or Examination mode. The Open Study Mode will allow you to answer each question at your own pace. You can also receive carefully tailored AI feedback and consult the written markscheme for each question.

The Examination Mode is a simulation of an exam/ or in-exam condition so you can answer all of the questions. Through this mode, you may choose to answer questions in any order you wish and go back to change answers before you submit. You can choose to time yourself, using the duration indicated. After completion, you will have access to all markschemes and video solutions, and you will receive AI feedback and an overall 1 - 7 mark on your submitted work.

In Examination Mode, your answers will be saved so you can always return to them. In Open Study Mode, you can attempt each question anew.

How is the Research in Psychology feature organised?

The Research in Psychology collection is organised according to the qualitative and quantitative nature of the data analysis. Qualitative research explores the depth and complexity of human behaviour through in-depth analysis of narratives and behaviours. Quantitative research in Psychology examines numerical data to understand human behaviour and thought processes. You may target a specific type of research you wish to revise for by answering questions related to describing and evaluating these research studies.

The qualitative and quantitative research in this collection are organised by topic; including the cognitive, biological, and sociocultural approaches to understanding behaviour. This allows you to choose a research related to a topic in the curriculum to aid in your revision. Although arranged in the three main approaches, each research may also relate to multiple subtopics. For example, you may pick a quantitative study on the cognitive approach and the study may also be linked to another approach and/or the options (Abnormal Psychology, Developmental Psychology, Health Psychology, & Human Relationships).

How long does it take for a student to answer the Research in Psychology feature?

The Research in Psychology feature in the Higher Level course is tailored for HL students and simulates the duration of the Paper 3 exam which is 60 minutes. Within this period, students may read the study, analyse the study, and provide short answers to questions on research methods, sampling methods, ethical considerations, credibility, generalisability, & possible biases in interpreting and/or presenting the results of the study.

Psychology Study Summaries and Research (SL)

Research in Psychology Feature (SL)

Welcome to the Revision Village IB Psychology Research in Psychology collection for SL students. This feature is designed to support students in familiarising themselves with research on key topics in the IB Psychology curriculum. This feature can help you revise different studies which may be essential for your Paper 1 examination.

When you access a Research in Psychology card, you will see a summary of a key study in Psychology on the left side. These studies deal with the following topics: cognitive, biological, & sociocultural approaches. These studies are regularly updated to help you acquire depth of knowledge and understanding regarding the fundamentals of research. Students should read the content of these studies carefully and assess their understanding by answering corresponding questions on the right side. The questions provided are related to describing the aim, method, results, strengths & limitations of a study, which are essential in answering Paper 1 short-answer and extended-response questions. You will be supported through the help of markschemes, video solutions, and Newton AI to scaffold your learning.



What is the difference between Open Study and Examination Mode?

This feature can be attempted in either Open Study or Examination mode. The Open Study Mode will allow you to answer each question at your own pace. You can also receive carefully tailored AI feedback and consult the written markscheme for each question.

The Examination Mode is a simulation of examination conditions so you can answer all of the questions. Through this mode, you may choose to answer questions in any order you wish and go back to change answers before you submit. You can choose to time yourself, using the duration indicated. After completion, you will have access to all markschemes and video solutions, and you will receive AI feedback and an overall 1 - 7 mark on your submitted work.

In Examination Mode, your answers will be saved so you can always return to them. In Open Study Mode, you can attempt each question anew.

How is the Research in Psychology feature organised?

The Research in Psychology collection is organised according to the qualitative and the quantitative nature of the data analysis. Qualitative research explores the depth and complexity of human behaviour through in-depth analysis of narratives and behaviours. Quantitative research in Psychology examines numerical data to understand human behaviour and thought processes.

The qualitative and quantitative research in this collection is organised by topic; including the cognitive, biological, and sociocultural approaches to understanding behaviour. This allows you to choose a study related to a topic in the curriculum to aid your revision. Although arranged in the three main approaches, each research may also relate to multiple subtopics. For example, you may pick a quantitative study on the cognitive approach and the study may also be linked to another approach

and/or the options (Abnormal Psychology, Developmental Psychology, Health Psychology, & Human Relationships).

How long does it take for a student to answer a Research in Psychology question set?

Each question set can take around 30 minutes to complete. Within this timeframe, students are expected to read the overview of the research and provide concise answers to questions on the aim, method, results, strengths & limitations of the study.
